

OFFICE | RETAIL SPACE FOR LEASE

11204 DAVENPORT STREET :: OMAHA, NEBRASKA 68154

- Space available:
 - 3,583 SF
 - 4,870 SFSuites can be combined: 8,453 SF
- Lease rate: \$12.25 PSF, NNN
- Office/Retail building with excellent visibility
- One block away from Dodge Street and interstate access
- New concrete parking lot and sidewalk
- Building signage available
- Several restaurants, new TD Ameritrade headquarters, hotels and other area amenities within one mile
- **BROKER INCENTIVE:**
 - :: With five year lease for entire vacancy: four Husker football tickets in the skybox for the 2014 season
 - :: With a minimum of 4,000 SF lease: two Husker football 2014 season tickets in skybox

11204 DAVENPORT STREET OFFICE | RETAIL FOR LEASE



CBRE | MEGA
Part of the CBRE affiliate network

FOR MORE INFORMATION CONTACT:

Steve Sheppard

First Vice President

+1 402 697 5836

ssheppard@cbre-mega.com

Jason Ruegg

Senior Associate

+1 402 697 5842

jruegg@cbre-mega.com

CBRE | MEGA

Part of the CBRE affiliate network

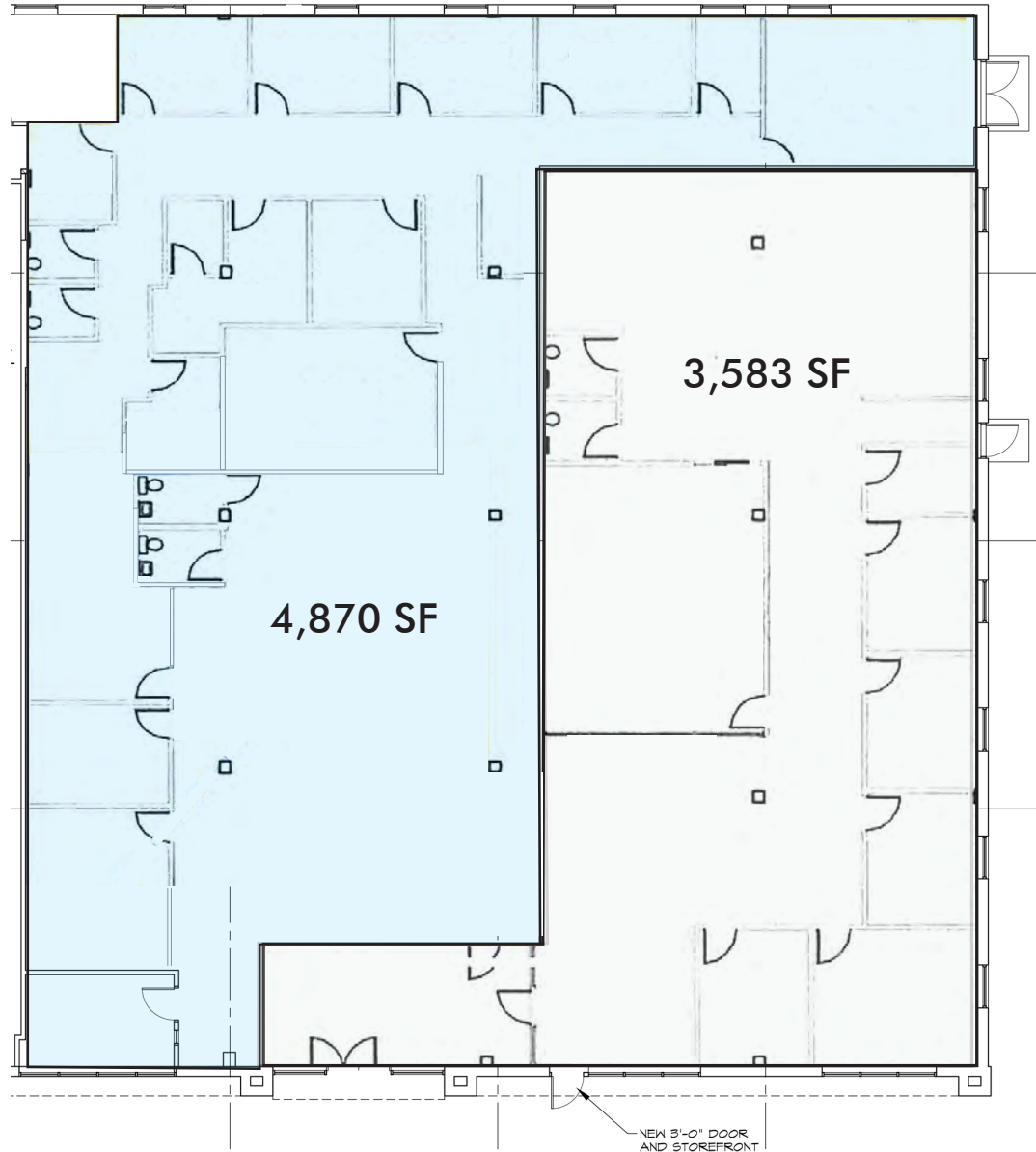
NOW
AVAILABLE

11204 DAVENPORT STREET

OFFICE | RETAIL FOR LEASE

OMAHA, NEBRASKA 68154

FLOOR PLAN
TOTAL SPACE
AVAILABLE:
8,453 SF



FOR MORE
INFORMATION
PLEASE
CONTACT

Steve Sheppard

First Vice President

+1 402 697 5836

ssheppard@cbre-mega.com

Jason Ruegg

Senior Associate

+1 402 697 5842

jruegg@cbre-mega.com

rev021314a © 2014 CB Richard Ellis, Inc. This information has been obtained from sources believed reliable. We have not verified it and make no guarantee, warranty or representation about it. Any projections, opinions, assumptions or estimates used are for example only and do not represent the current or future performance of the property. You and your advisors should conduct a careful, independent investigation of the property to determine to your satisfaction the suitability of the property for your needs. Photos herein are the property of their respective owners and use of these images without the express written consent of the owner is prohibited. All marks displayed on this document are the property of their respective owners.

CB Richard Ellis | MEGA
11213 Davenport Street
Suite 300

Omaha, NE 68154

www.cbre.com/omaha

CBRE | MEGA

Part of the CBRE affiliate network

NOW
AVAILABLE

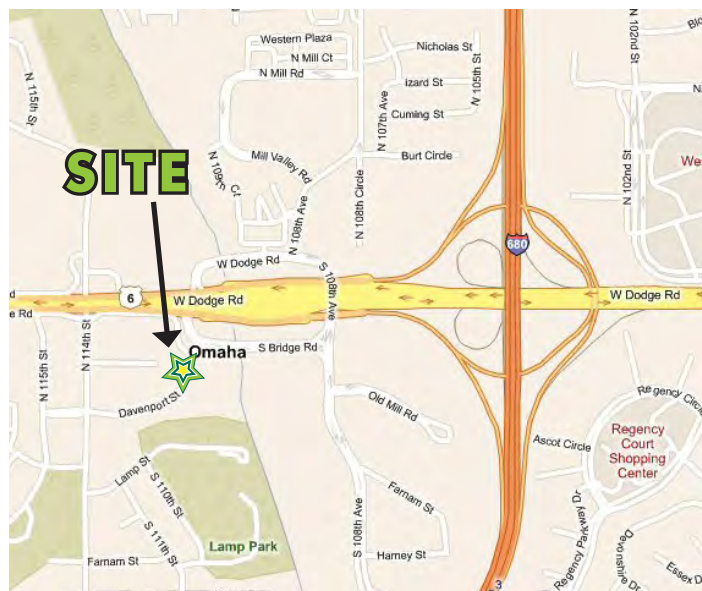
11204 DAVENPORT STREET OFFICE | RETAIL FOR LEASE

OMAHA, NEBRASKA 68154

AERIAL



MAP



BUILDING INFORMATION

- :: 15,250 SF building
- :: Built in 1980
- :: Renovated in 2000
- :: 1.17 acre lot
- :: New concrete parking lot

FOR MORE
INFORMATION
PLEASE
CONTACT

Steve Sheppard
First Vice President
+1 402 697 5836
ssheppard@cbremega.com

Jason Ruegg
Senior Associate
+1 402 697 5842
jruegg@cbre-mega.com

CB Richard Ellis | MEGA
11213 Davenport Street
Suite 300
Omaha, NE 68154
www.cbre.com/omaha

CBRE | MEGA

Part of the CBRE affiliate network