

LAND FOR SALE

OFFICE/RETAIL

COMMERCIAL LOTS

110TH & BLONDO STREETS

Omaha, NE 68164



OFFICE/RETAIL LAND

SALE PRICE & AVAILABILITY:

::	LOT 1*	1.88 AC	::	Under Contract
::	LOT 2	\$9.50 PSF	::	1.80 AC; 79,253 SF
::	LOT 3	\$9.50 PSF	::	1.87 AC; 81,461 SF
::	LOT 4	\$9.50 PSF	::	1.66 AC; 72,575 SF

*Lot on hard corner; NEC of 111th and Blondo

- + Hard to find infill site
- + Shovel-ready site
- + Zoned MU
- + Near several restaurants/service retail
- + Two minutes to I-680 and three minutes to Dodge Street
- + Also available as Build-To-Suit with one of Omaha's premier developers



www.cbre.us/omaha

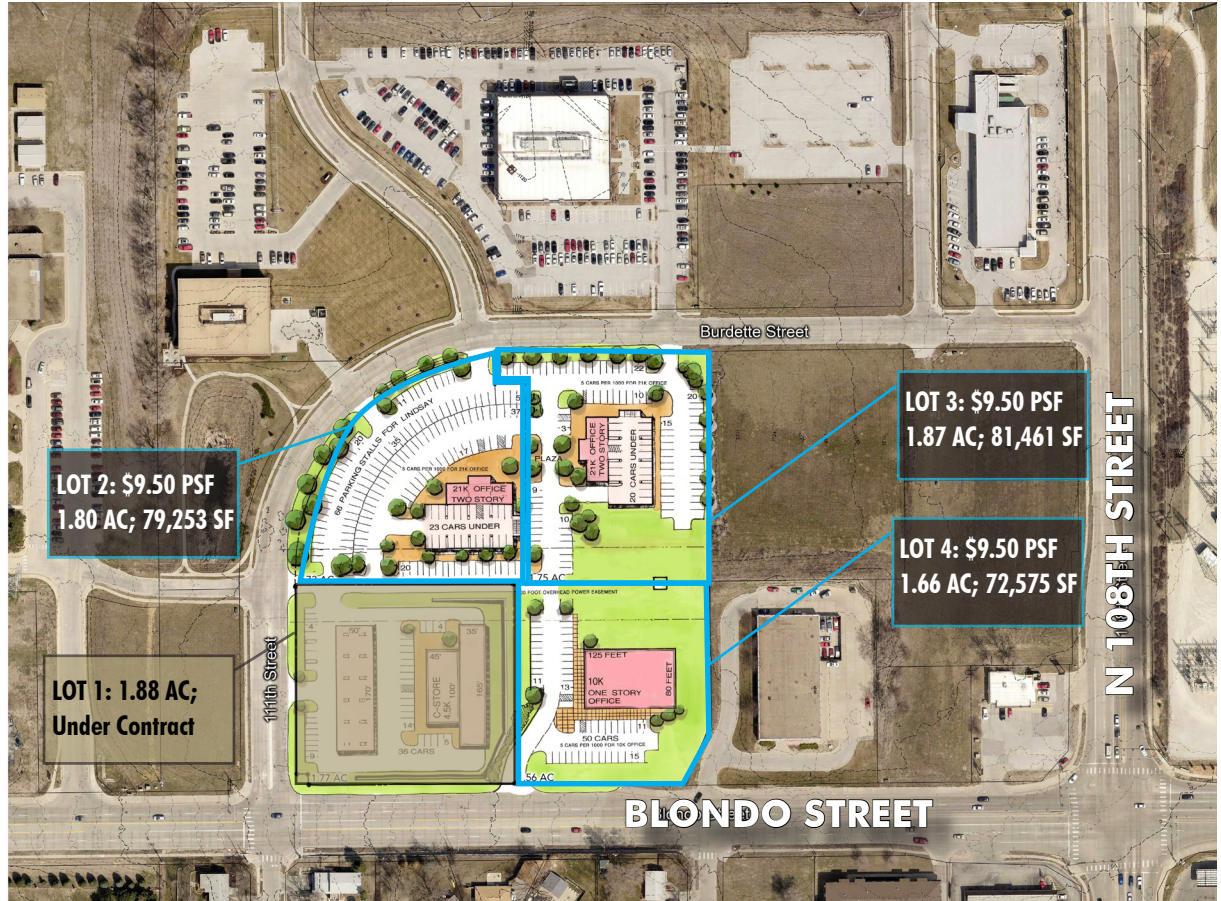
CBRE

LAND FOR SALE COMMERCIAL OFFICE/RETAIL

110TH &
BLONDO STREETS
Omaha, NE 68164



CONCEPTUAL LAYOUT



SITE MAP



ZONING MAP



www.cbre.us/omaha

CBRE

LAND FOR SALE COMMERCIAL OFFICE/RETAIL

110TH &
BLONDO STREETS
Omaha, NE 68164



AREA AMENITIES



CONTACT US

STEVE SHEPPARD

First Vice President
+1 402 697 5836
steve.sheppard@cbre.com

CBRE | OMAHA

11213 Davenport St, Ste 300
Omaha, NE 68154
+1 402 334 8877

071519au © 2019 CBRE, Inc. All rights reserved. This information has been obtained from sources believed reliable, but has not been verified for accuracy or completeness. You should conduct a careful, independent investigation of the property and verify all information. Any reliance on this information is solely at your own risk. CBRE and the CBRE logo are service marks of CBRE, Inc. All other marks displayed on this document are the property of their respective owners, and the use of such logos does not imply any affiliation with or endorsement of CBRE. Photos herein are the property of their respective owners. Use of these images without the express written consent of the owner is prohibited.

www.cbre.us/omaha

CBRE